

RESEARCH CONSULTANCY FOR PRIVATE PRACTICES (M²RP - PRIVATE PRACTICE)



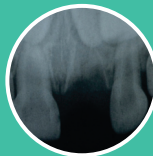
How about publishing your data in high impact journals for the rest of the world

We will access your data, suggest possible research questions, develop a protocol, analyse your data, and write a paper with your inputs. Your team members will be the primary authors with our team members (maximum of two from Ignobilis) as co-authors, papers will be published in high impact journals.

Two publications over a period of 6 months (@1500 USD/month)



Do you have excellent pictures and data in your practice?



Do you have years of data and voluminous radiographs and photographs?



How about making a path breaking contribution from your data?

1

ONE OF OUR TEAM MEMBER WILL VISIT YOUR PRACTICE AND ACCESS YOUR DATA

2

WE WILL DEVELOP A PROTOCOL FROM YOUR DATA

3

WE WILL WRITE A GOOD SCIENTIFIC PAPER FOR YOU

LET YOUR WORK LIVE AFTER YOU

Step 1 - Day 1 - Google Meet - Understanding the Data availability and Types (Photographs, CBCT, Radiographs, Study models, Caries Recording/Charting, etc.)

Step 2 - Day 14 - Google Meet - Discussion of the Preliminary Research Questions with relevant Review of Literature.

Step 3 - Day 30 - Google Meet - Protocol Presentation with Appropriate Methodology / Approval of the Protocol.

Step 4 - Day 45 - Submission to the relevant Ethical Committee.

Step 5 - Day 60 - Visit to the Private Practice - One week stay at or nearby the Practice (One well trained team member from Ignobilis Terrain LLP with good research training); 7 days intensive data collection.

Step 6 - Day 90 - Google Meet - Preliminary Results and Statistical Analysis Presentation by Ignobilis Research Associate.



Step 7 - Day 120 - Google Meet - Final Manuscript Presentation by Ignobilis Research Associate.

Step 8 - Day 135 - Plagiarism Check and Language Editing - Email Communication.

Step 9 - Day 150 - Google Meet - Discussion and Final approval of the manuscript by the team.

Step 10 - Day 170-180 - Submission of the manuscript to High Impact Peer Reviewed Journal.

You decide the authorship order and role

Address All Queries to (Administrative Office)

Ignobilis Terrain LLP

Sri Ramachandra Innovation Incubation Centre,

Sri Ramachandra Institute of Higher Education and Research, Porur, Chennai - 600116, Tamilnadu, India

Email : brokentoorth.ignobilis@gmail.com

Contact no: Ms. Ananya : +917767018905 (WhatsApp)

Bank Details for NEFT/Cheque/Demand Draft

Name of the account holder : Ignobilis Terrain LLP

Name of the Bank : HDFC Bank

Account No : 50200021838107

Branch : Porur, Chennai

IFSC Code : HDFC0000390

Ignobilis Terrain LLP - Start Up from Sri Ramachandra Innovation Incubation Centre (www.ignobilis.in)



Ignobilis
Terrain

Ignite & Illuminate